



WELLIVA

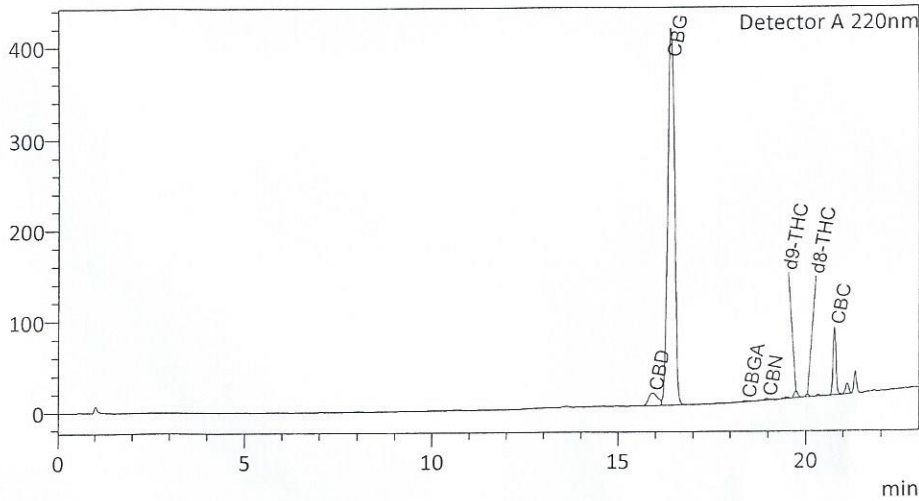
Certificate of Analysis

Sample Information

Sample ID : P-NHC-CBG-1MB1_12162019
 Sample Type : Whole Plant Extract, CO2
 Analyst : KB
 Receipt Date : NA
 Test Date : 12/17/2019

Chromatogram

mV



Cannabinoid Summary

Detector A

ID#	Name	Weight %
1	CBDV	0.00
2	CBD	2.78
3	CBG	66.95
4	CBDA	0.00
5	CBGA	0.11
6	CBN	0.08
7	d9-THC	0.69
8	d8-THC	0.25
9	CBC	4.89
10	THCA-A	0.00

Total CBG	67.05	%
Total CBG	670.53	mg/g
Total THC	0.69	%
Total THC	6.89	mg/g



Percentage data represents weight percentage of sample

The collected data was compared to data collected for certified reference standards at known concentrations.

Total THC = THCa * 0.877 + d9-THC; Total CBD = CBDA * 0.877 + CBD; Instrument: High Performance Liquid Chromatography (HPLC)

A value of 0.00 indicates that the cannabinoid was not detected (ND), however it could be present at a level below the limit of detection.



P-NHC-CBG-1MB

-
Total Cannabinoids Serving Size

BATCH # N/A - Tested 12/20/2019 for Safety

SAFETY PROFILES

Heavy Metals Screen

	Allowable Limit	Amount Detected	Limit of Detection	Limit of Quantification	Disposition
Arsenic	200 ppb	ND	41.9 ppb	127.0 ppb	N/A
Cadmium	200 ppb	204 ppb	37.7 ppb	114.1 ppb	N/A
Mercury	100 ppb	BQL	21.6 ppb	65.6 ppb	N/A
Lead	500 ppb	ND	20.6 ppb	62.6 ppb	N/A

Microbiological Contaminant Screen

	Allowable Limit	Amount Detected	Disposition
Total Viable Aerobic Bacteria	10000 CFU/g	<100 CFU/g	N/A
Total Yeast & Mold	1000 CFU/g	<100 CFU/g	N/A
Total Bile-Tolerant Gram Negative Bacteria	100 CFU/g	<100 CFU/g	N/A
STEC	Not Detected in 1 gram	Not Detected	N/A
Salmonella	Not Detected in 1 gram	Not Detected	N/A

Mycotoxin Screen

	Allowable Limit	Amount Detected	Limit of Detection	Limit of Quantification	Disposition
Ochratoxin A	N/A	ND	2.3 ppb	7.6 ppb	N/A
Aflatoxin B1	5 ppb	ND	1.0 ppb	3.3 ppb	N/A
Aflatoxin B2	N/A	ND	1.9 ppb	6.3 ppb	N/A
Aflatoxin G1	N/A	ND	1.2 ppb	4.0 ppb	N/A
Aflatoxin G2	N/A	ND	1.1 ppb	3.6 ppb	N/A

Pesticide Screen

	Allowable Limit	Amount Detected	Limit of Detection	Limit of Quantification	Disposition
Imazalil	7.9 ppb	ND	7.9 ppb	25.9 ppb	N/A
Imidacloprid	34.7 ppb	ND	34.7 ppb	114.4 ppb	N/A
Myclobutanil	14.8 ppb	ND	14.8 ppb	49 ppb	N/A
Trifloxystrobin	17.9 ppb	ND	17.9 ppb	59.1 ppb	N/A
Acephate	19.6 ppb	ND	19.6 ppb	64.8 ppb	N/A
Acetamiprid	8.7 ppb	ND	8.7 ppb	28.8 ppb	N/A
Aldicarb	13.3 ppb	ND	13.3 ppb	43.9 ppb	N/A
Carbaryl	11.2 ppb	ND	11.2 ppb	37 ppb	N/A
Chlorantraniliprole	14.7 ppb	ND	14.7 ppb	48.4 ppb	N/A
Chlorpyrifos	16.4 ppb	ND	16.4 ppb	54 ppb	N/A
Clofentezine	20.5 ppb	ND	20.5 ppb	67.5 ppb	N/A
DDVP	21.7 ppb	ND	21.7 ppb	71.6 ppb	N/A
Dimethoate	14.9 ppb	ND	14.9 ppb	49.1 ppb	N/A
Ethoprophos	18.8 ppb	ND	18.8 ppb	62.2 ppb	N/A
Fenoxycarb	8.7 ppb	ND	8.7 ppb	28.8 ppb	N/A
Fenpyroximate	6.3 ppb	ND	6.3 ppb	20.7 ppb	N/A

Flonicamid	9.5 ppb	ND	9.5 ppb	31.3 ppb	N/A
Fludioxonil	N/A	N/A	N/A	N/A	N/A
Malathion	19.9 ppb	ND	19.9 ppb	65.8 ppb	N/A
Metalaxyl	13.9 ppb	ND	13.9 ppb	45.9 ppb	N/A
Methiocarb	13.9 ppb	ND	13.9 ppb	45.8 ppb	N/A
Methomyl	15.7 ppb	ND	15.7 ppb	51.9 ppb	N/A
Naled	6.6 ppb	ND	6.6 ppb	21.7 ppb	N/A
Oxarnyl	16.2 ppb	ND	16.2 ppb	53.4 ppb	N/A
Propoxur	19.8 ppb	ND	19.8 ppb	65.3 ppb	N/A
Pyridaben	14.5 ppb	ND	14.5 ppb	47.7 ppb	N/A
Spirotetramat	14.6 ppb	ND	14.6 ppb	48.2 ppb	N/A
Spiroxamine	19 ppb	ND	19 ppb	62.7 ppb	N/A
Tebuconazole	17 ppb	ND	17 ppb	56.2 ppb	N/A
Thiacloprid	12.9 ppb	ND	12.9 ppb	42.8 ppb	N/A
Thiamethoxam	11.6 ppb	ND	11.6 ppb	38.4 ppb	N/A

Percentage data represents weight percentage of sample as received by PHR Labs. This report and all information herein shall not be reproduced except in its entirety without the expressed consent of PHR Labs. Results may vary. Results are only for the sample supplied to PHR Labs.

This product has not been analyzed or approved by the FDA. There is limited information on the side effects of using this product, and there may be associated health risks. Marijuana use during pregnancy and breast-feeding may pose potential harm. Do not drive or operate machinery when under the influence of this product. KEEP THIS PRODUCT AWAY FROM CHILDREN.